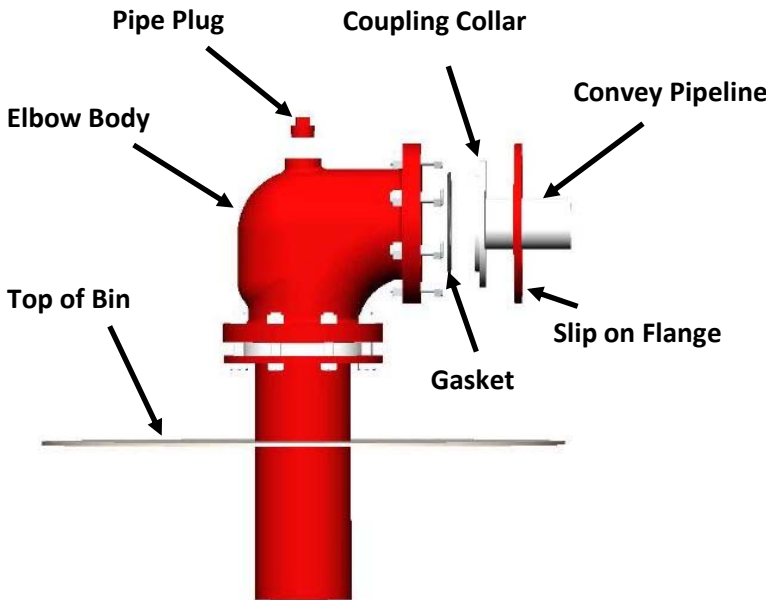
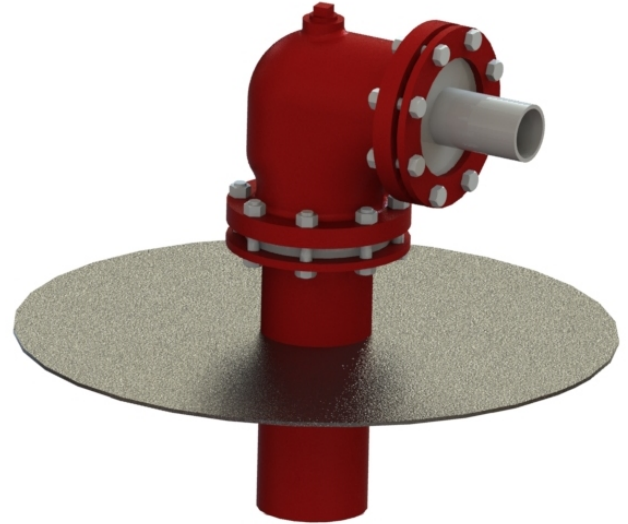




Expansion Elbow

The **Dense Flow Expansion Elbow** is intended for use at the last turn or bend of a pneumatic conveying systems pipeline. Its design helps to reduce material velocity, and features a unique “pocket” at the material deflection point which greatly increases the elbows lifespan.



The proven pocket design traps the initial material moving through the elbow at the material deflection point. The trapped material then acts as a barrier protecting the elbow from any remaining material being conveyed.

Features

- Cast Ductile Iron Body
- Unique Pocket Design
- Expansion Chamber
- Lower Material Velocities
- Optional HD Hardening

Benefits

- Increased Lifespan
- Less Downtime
- Lower Maintenance Costs
- Less Material Degradation
- Even Material Flow

Applications

- Dense Phase Conveying
- Dilute Phase Conveying
- Truck Unload Pipelines

